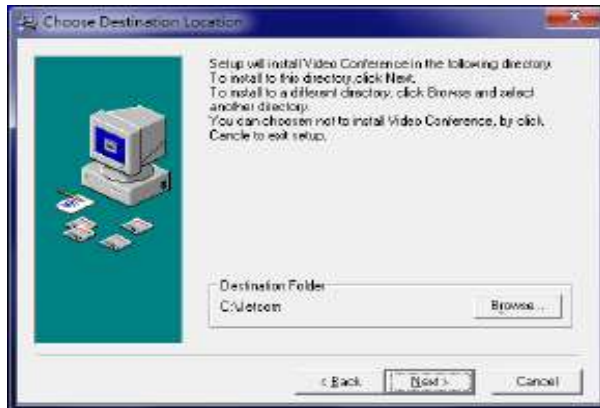


Windows Users Manual

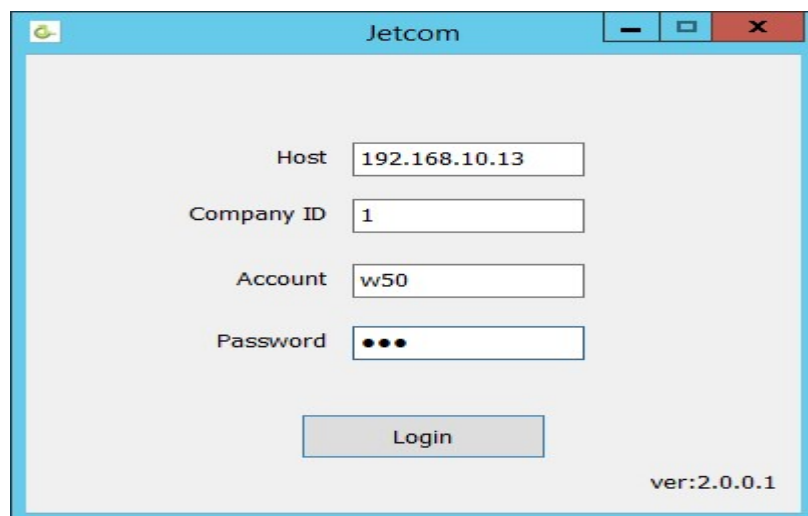
Click **JetCom-VC_Setup.exe** installation file, then keep clicking **Next to install. After installing showing** on the desktop of PC



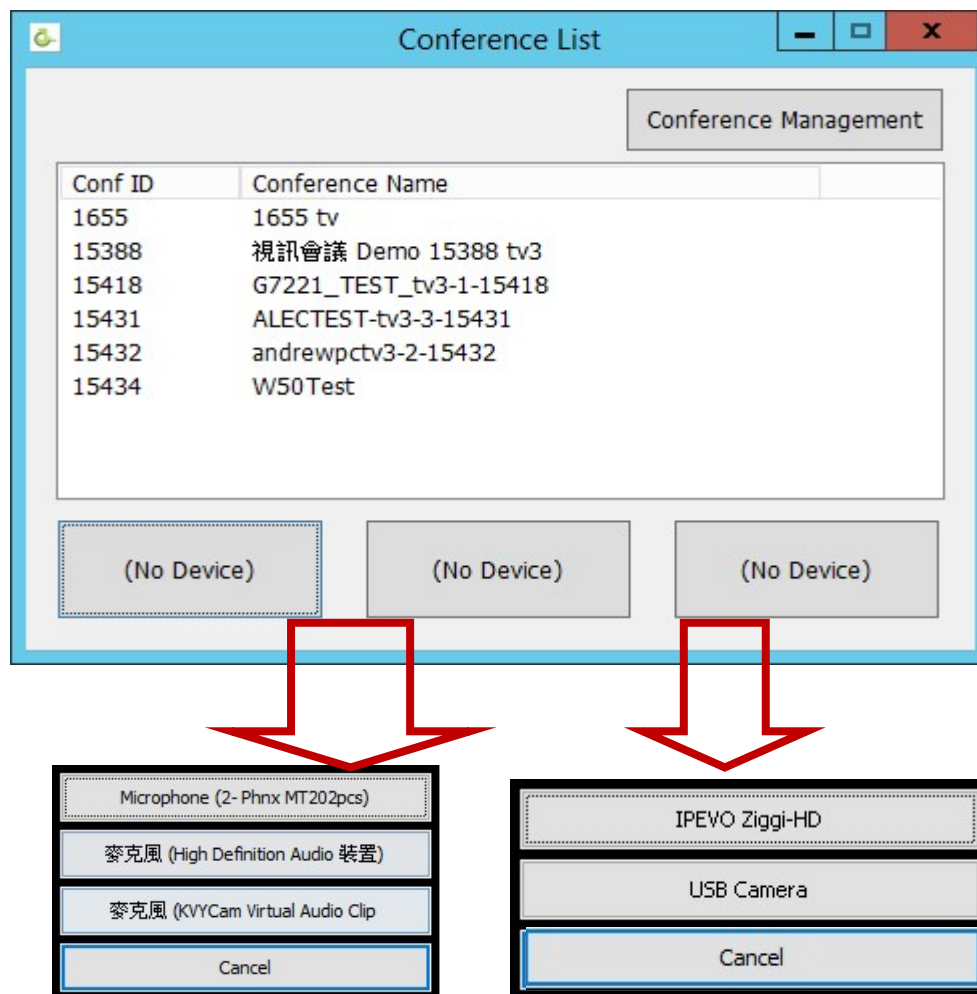
Click **JetCom-VC**



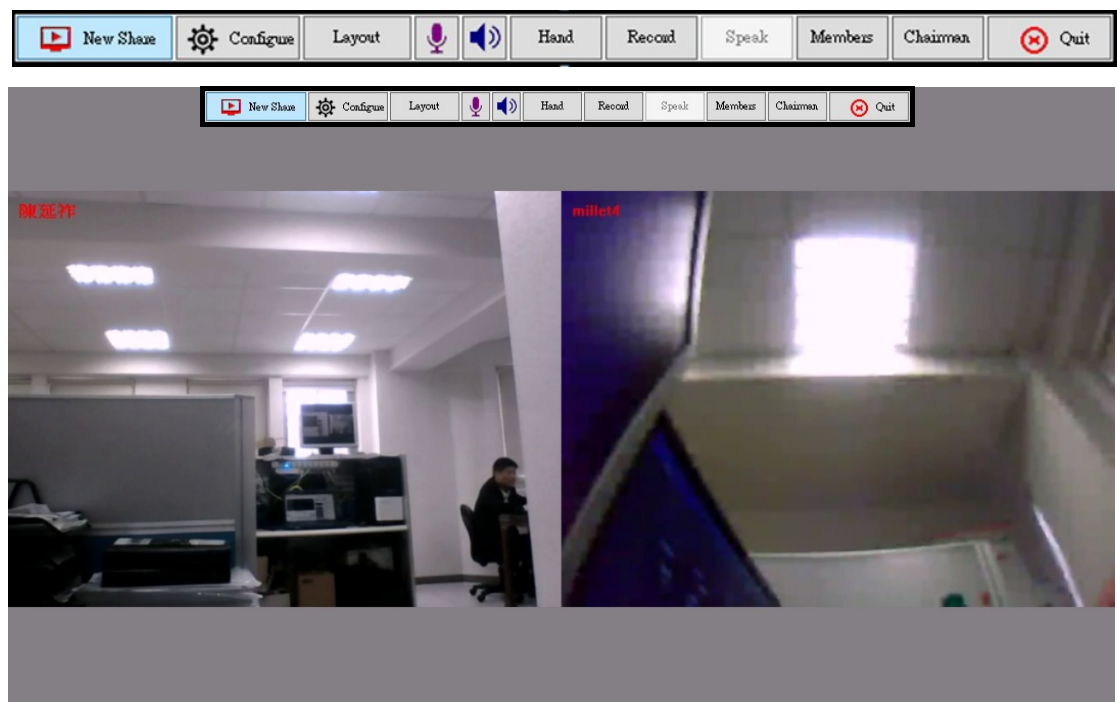
Enter Host ip, Company Id, Account, Password then Login.



Select microphone, speaker, camera before entering conference.

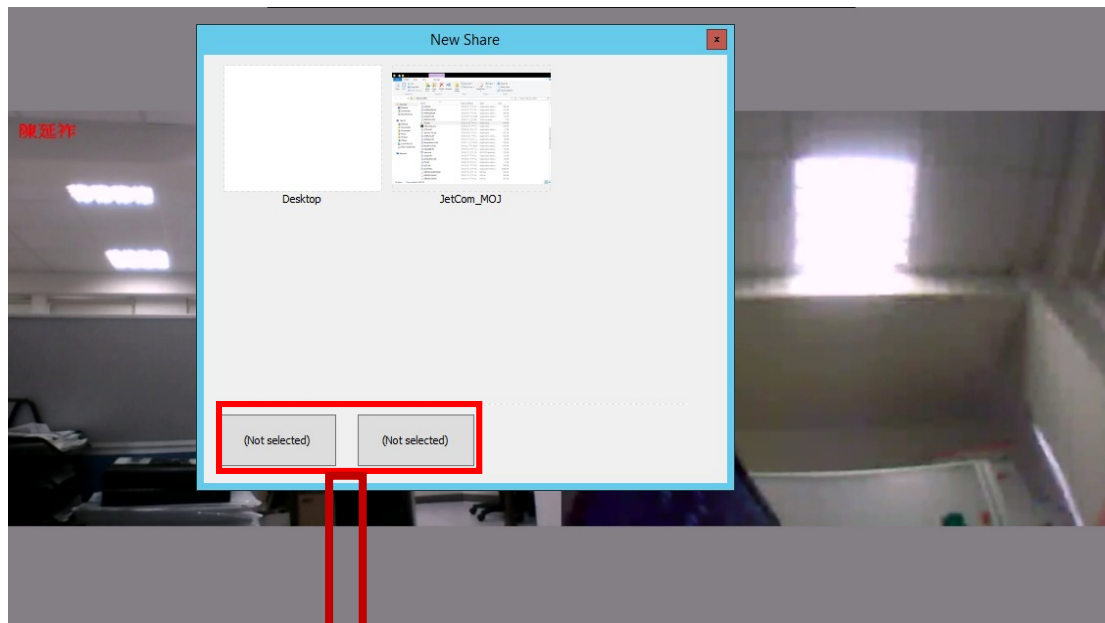


1. Function Menu



1.1: Desktop Sharing to every conference member

1.1.1: Click [New Share] to show the Pop-Up menu.



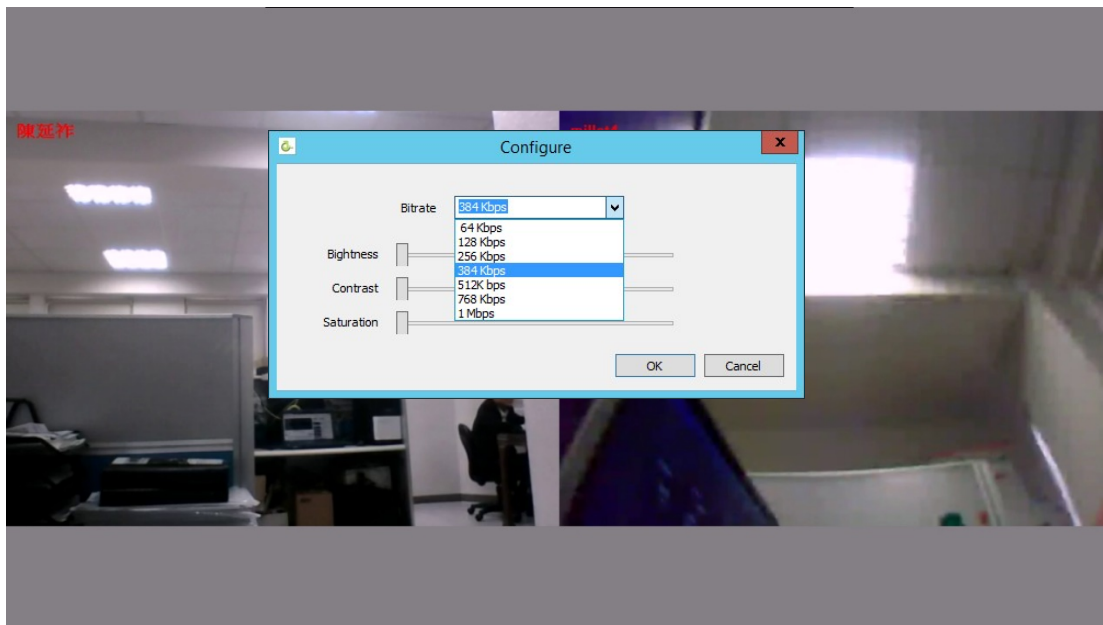
Select external USB sound card box(microphone, speaker mix together)
Optional, In order to share desktop audio to members of conference.

1.1.2: Click Desktop on New Share->Open the sharing file->
[Stop Sharing]->[New Share]->Select an application to
share ex:ppt, pdf, word...etc.

1.1.3: Click [Doodle] to highlight the application.



1.2: Click [**Configure**] to change uploading bandwidth of camera and desktop sharing.

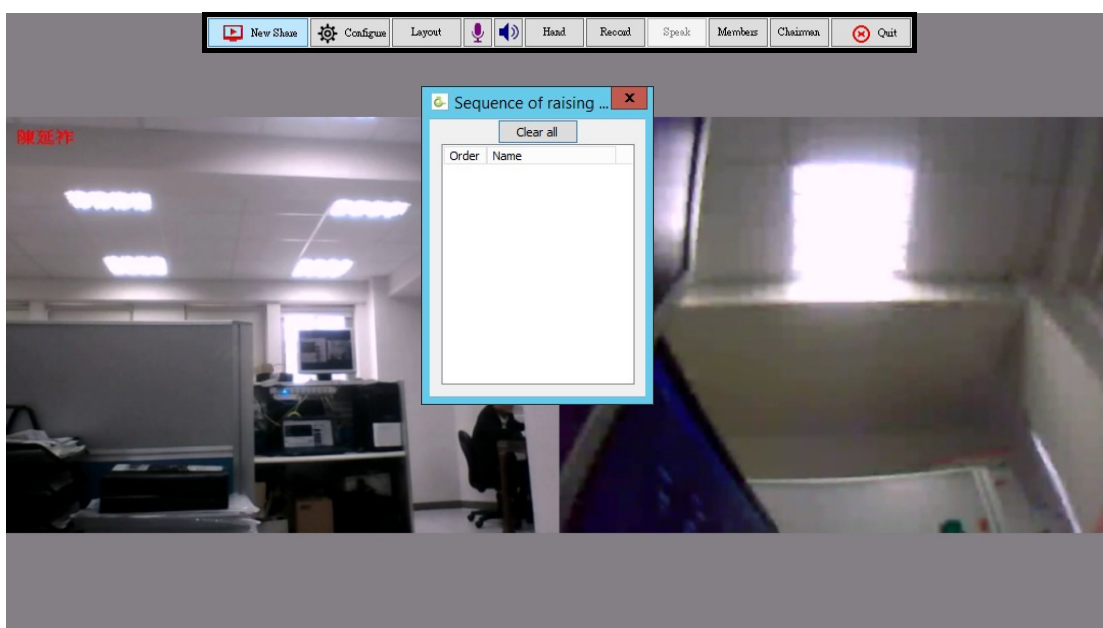


1.3: [**Layout**]: Show local camera or transcode window on desktop sharing mode.

1.4: [**MIC**]: Microphone volume.

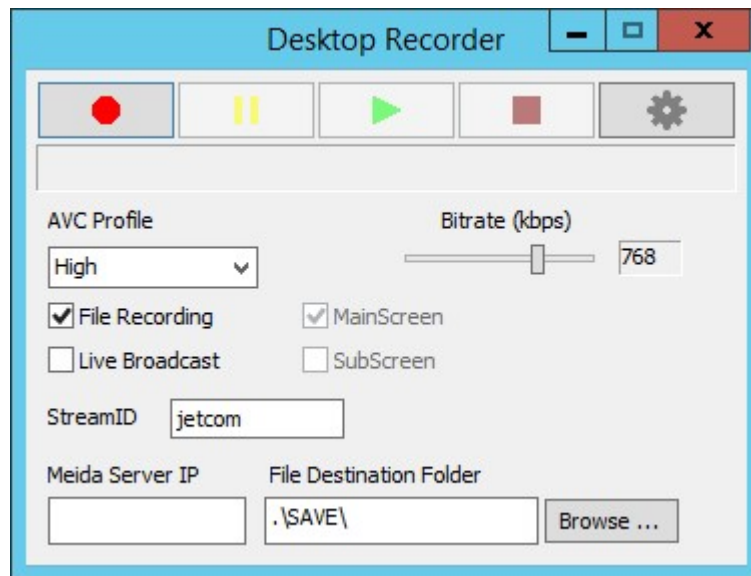
[**SPEAKER**]: Speaker volume.

1.5: [**Hand**]: On chairmanship show members who are raising hand.
On membership raise hand to chairman to ask speak right.





1.6: [Speak/Mute]: On chairmanship toggles all members to speak or mute.

1.7: [record]: Recording video & audio of the desktop of PC.



Click  to setup recording parameters

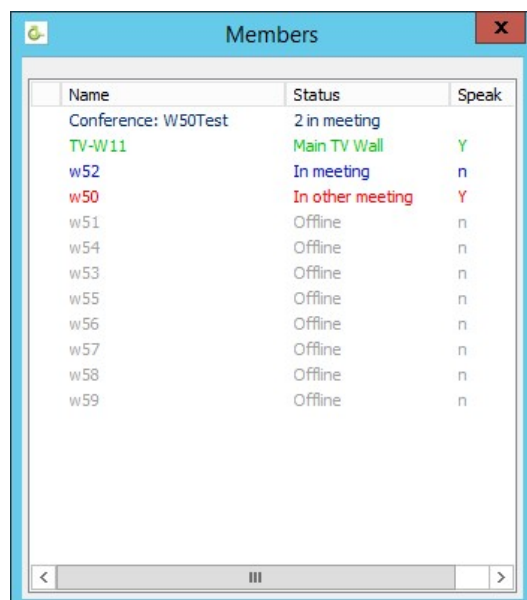
Click  to start recording

Click  to stop recording

1.8: Click [Chairman] to get chairman right.

1.9: Click [Quit] to leave conference.

1.10: Click [Members] to show Members pop-up memu.



1.10.1: Click right button on member status [In meeting] to select [Move to Main position], [Chairmanship], [Speak/Mute], [Expel].

- 1.10.2: Click right button on member status [Idle]
to select [Invite].
- 1.10.3: Click right button on member status [Main TV Wall].
to select [Default window], [Expel], [TVLayout].
- 1.10.3.1 [TVLayout]: To select Screen number &
Screen member layout of TV transcode window.

